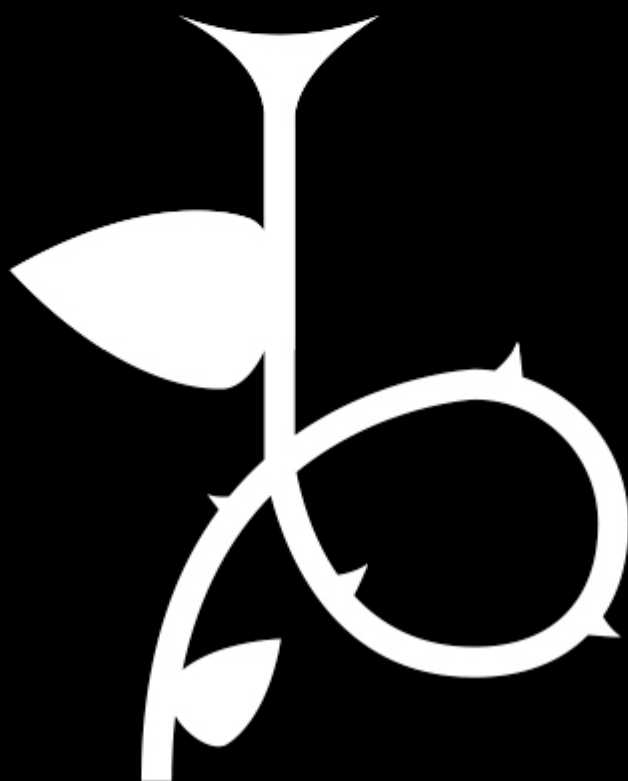


# TECHNICAL RIDER

Grandad's House



Premio Nacional de las Artes Escénicas para la Infancia y la Juventud 2011

---

Minimum stage size: Width 5m, Depth 4m, Height 3m

Light and sound is supplied by the company. Sockets to be available at side of stage.

A black chamber and total darkness are required during the performance.

A bar needs to be suspended behind the set to hang a curtain (supplied by the company) and the electrical equipment.

Technical requirements:

Power supply for lighting: 3000 W

Power supply for sound: 200 W

Sound and light engineer: **Katia Moretti** +34617573321 [teilumino@gmail.com](mailto:teilumino@gmail.com)

## TIMES

Load-in and set dressing: 3 hours

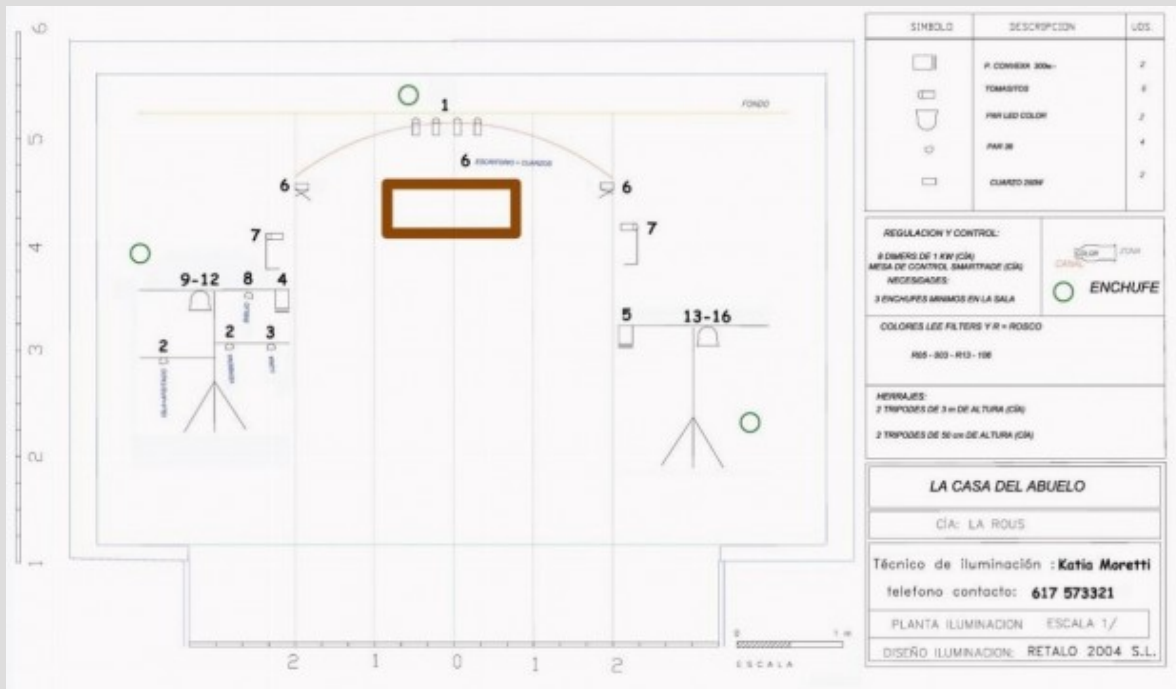
Load-out: 1 hour

Assistant personnel required: 1 electrician/FOH technician, plus personnel for loading in and out.

\*Running time: 50 minutes



# LIGHT PLANE





LA  
RO  
US

DISTRIBUCIÓN

Soledad Gallardo

+34 958 07 06 56

+34 619 42 00 26

Granada

[larousteatro@gmail.com](mailto:larousteatro@gmail.com)

[www.larousteatro.es](http://www.larousteatro.es)

---