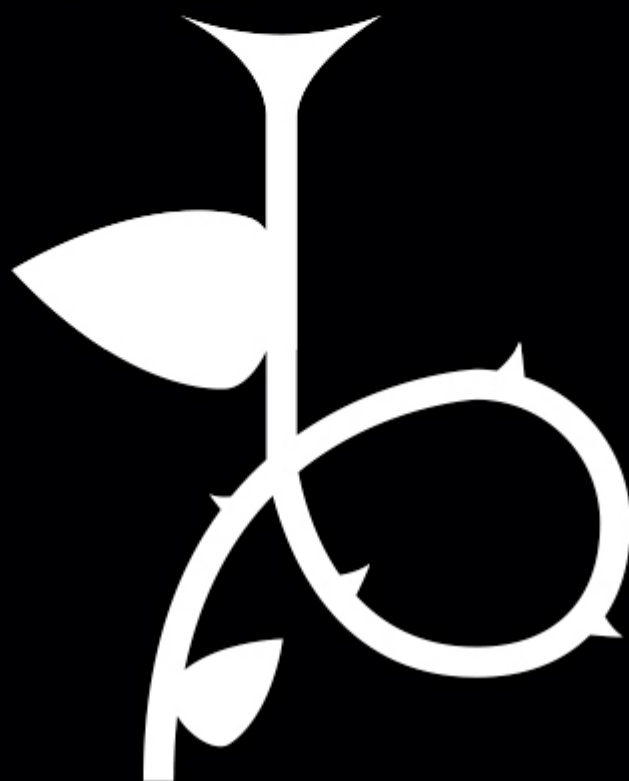


DOSSIER

Grandad's House





Puppets and Objects

2009 Feten Best children's show

Show recommended from 5 years

SYNOPSIS

Granddad lives an ordinary life: he bathes at the same time, goes for a walk at the same time and eats his breakfast at the same time each and every day.

One day his legs decide to stop walking and, little by little, he dims.

When granddad finally departs, his loved ones build a house very close to him so that he won't feel lonely. And so the story goes: placidly opening and closing drawers, tenderly remembering special moments of his life through the magic of an old desk.

They say that the departed live on thanks to the memories of those who loved them...



GENERAL INFORMATION

Premiere January 2nd 2009 – Almería

Text in Spanish, French, Portuguese and English

Running time 50 minutes

TECHNICAL REQUIREMENTS

Load-in and set dressing: 3 hours

Load-out: 1 hour

Assistant personnel required: 1 electrician/FOH technician, plus personnel for loading in and out.

Técnica de luces y sonido Katia Moretti 617573321 teillumino@gmail.com

MINIMUM STAGE SIZE

Width 5m, Depth 4m, Height 3m

Light and sound is supplied by the company. Sockets to be available at side of stage.

A black chamber and total darkness are required during the performance.

A bar needs to be suspended behind the set to hang a curtain (supplied by the company) and the electrical equipment.

Power supply for lighting: 3000 W

Power supply for sound: 200 W

CAST AND CREW

Author: Rosa Díaz

Script collaboration: Ángeles Jiménez

Actress & puppeteer: Rosa Díaz

Lighting designer: Retalo 2004 y Mauricio Zabaleta

Set designer: Ariel García Y Rosa Díaz

Set construction: José Toral

Costume designer: Laura León y Ángeles Jiménez

Music: Mariano Lozano-P

Objects direction: M^a José Frías

Prop designer: Ariel García , Elisa Ramos y Rosa Díaz

Prop construction: Ariel García, Elisa Ramos e Iker Pérez

Puppets: Ariel García e Iker Pérez

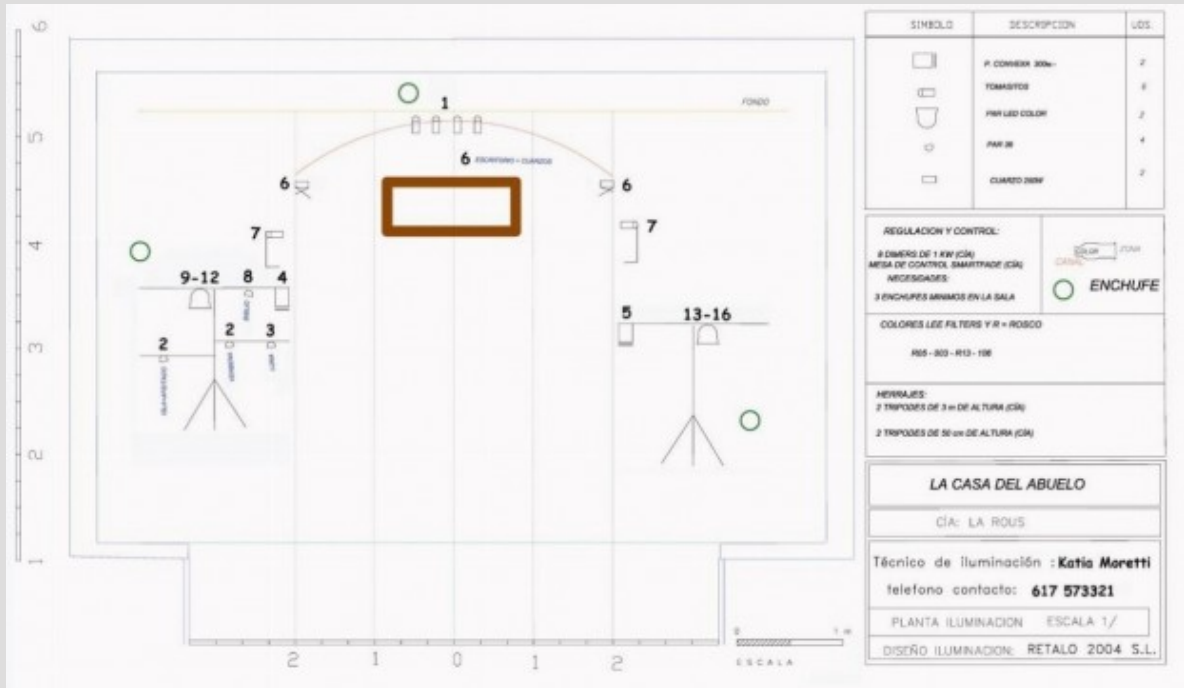
Web & graphic design: Colectivo Verbena

Photography: Pepei Díaz Clemente

Project Design Illustration: Elena Díaz Frutos

Direction: Mauricio Zabaleta y Rosa Díaz

Production: Cía .La Rous y la Agencia Andaluza de Instituciones Culturales. Consejería de Cultura de la Junta de Andalucía



LIGHTING PLANE



LA
RO
US

DISTRIBUCIÓN

Soledad Gallardo

+34 958 07 06 56

+34 619 42 00 26

Granada

larousteatro@gmail.com

www.larousteatro.es
