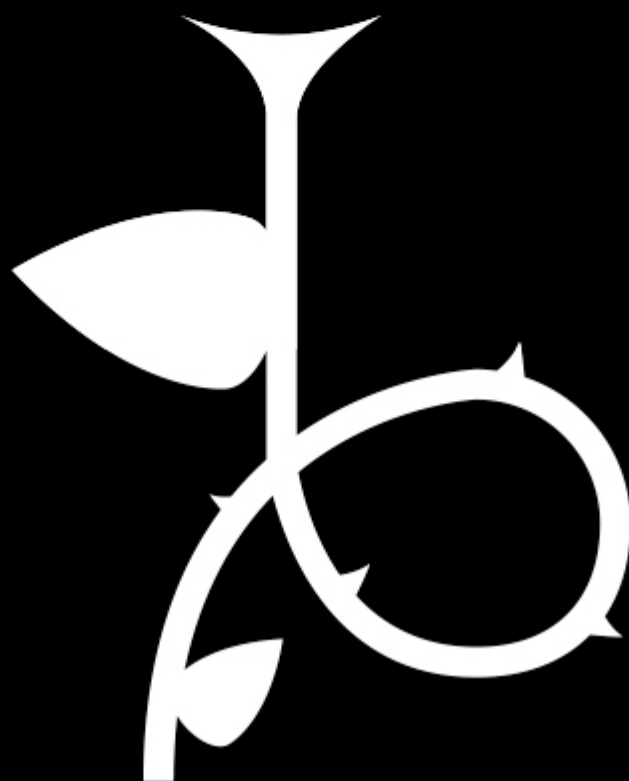


TECHNICAL RIDER

A Girl



Premio Nacional de las Artes Escénicas para la Infancia y la Juventud 2011

Minimum stage size: Width 7m, Depth 6m, Height 4m

The lighting and sound control must be in the same place because it is doing for the same person.

Technical requirements:

LIGHT

Power supply for lighting: 3500 W

28 dimmer channels (2000w each)

3 street tower structures, height: 1.40m. and 3.30 m.

2 floor pedestals for focus

2 direct outlets, one on each side stage

3-pin DMX dimmer for the scenery in right stage and led Par in right and left stage.

Spotlights: All with visors and filter holder:

17 profile 15/30 °, 8 pcs 1000w, 4 PAR 64 CP60 (n.1).

The company provides 8 channels of dimmers in stage design, lighting desk, 2 LED PAR 3 fans and smoke machine (off alarmfire).

SOUND

2 CD players with autocue (work simultaneously).

Miking environment in the scenery.

Soundboard (5 channels).

PA equipment will step behind the scenery on either side of it and monitors on stage.

TRAMOYA

A black chamber and total darkness are required during the performance.

Black backdrop with central opening from which scene objects will be drawn (or leg from center stage to sides stage).

Front cloth curtains.

3 legs on each stage side.

3 booms to mask spotligh.

Sound an lighth engineer: Katia Moretti +34617573321 teilumino@gmail.com

TIMES

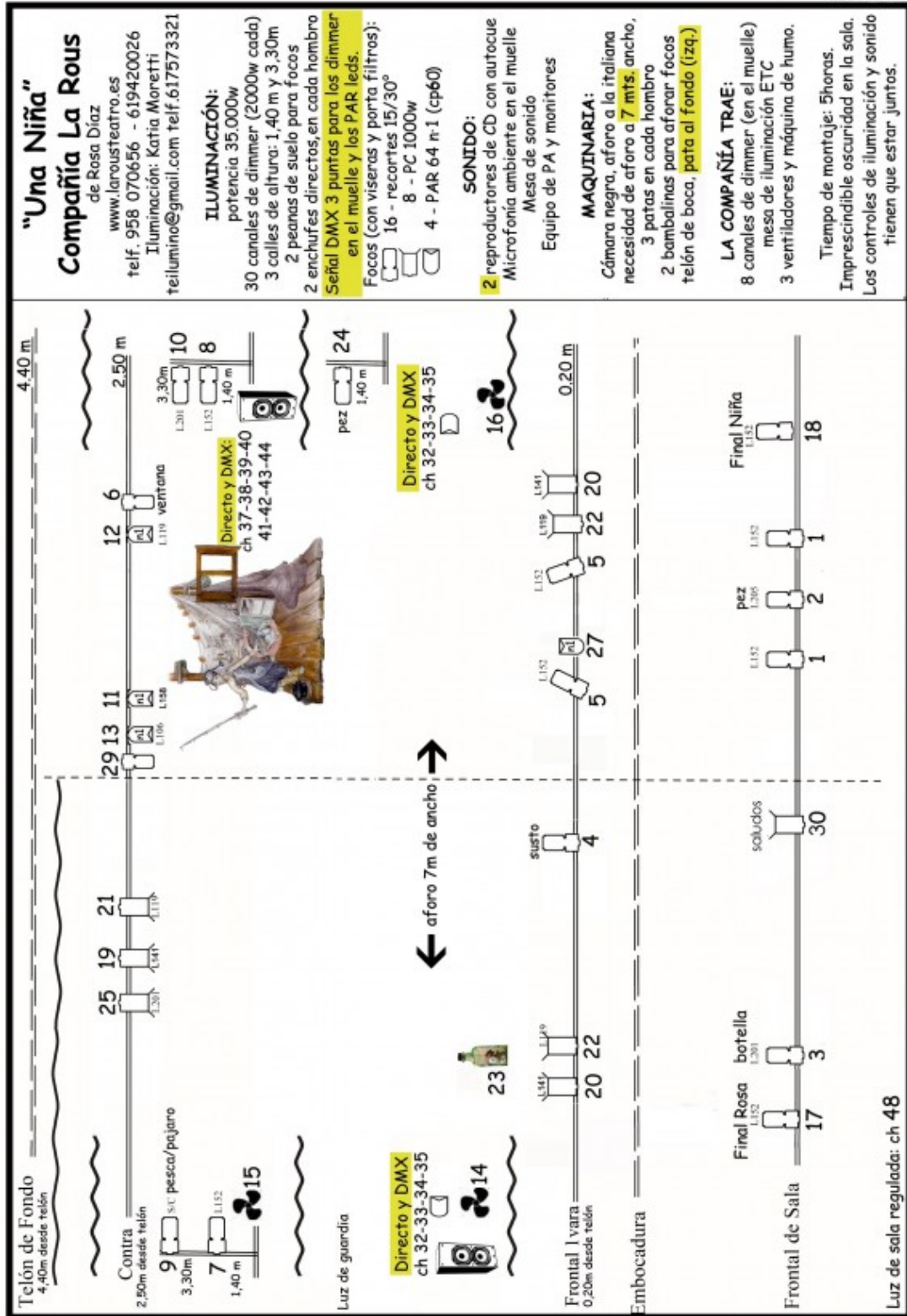
Load-in and set dressing: 5 hours

Load-out: 1 hour

Assistant personnel required: 1 electrician/FOH technician and 1 stage hand, plus personnel for loading in and out.



LIGHT PLANE



"Una Niña"
Compañía La Rous
de Rosa Diaz
www.larousteatro.es
telf. 958 070656 - 619420026
Iluminación: Katia Monetti
teillumino@gmail.com telf. 617573321

ILUMINACIÓN:
potencia 35.000W
30 canales de dimmer (2000w cada)
3 calles de altura: 1,40 m y 3,30m
2 peanas de suelo para focos
2 enchufes directos, en cada hombro

Señal DMX 3 puntos para los dimmer en el muelle y los PAR leds.

Focos (con viseras y porta filtros):
16 - recortes 15/30°
8 - PC 1000w
4 - PAR 64 n-1 (cp60)

SONIDO:
2 reproductores de CD con autocue
Microfonía ambiente en el muelle
Mesa de sonido
Equipo de PA y monitores

MAQUINARIA:
Cámara negra, aforo a la italiana
necesidad de aforo a 7 mts. ancho,
3 patas en cada hombro
2 bambalinas para aforar focos
telón de boca, pata al fondo (izq.)

LA COMPAÑÍA TRAE:
8 canales de dimmer (en el muelle)
mesa de iluminación ETC
3 ventiladores y máquina de humo.

Tiempo de montaje: 5horas.
Imprescindible oscuridad en la sala.
Los controles de iluminación y sonido tienen que estar juntos.



LA
RO
US

DISTRIBUCIÓN

Soledad Gallardo

+34 958 07 06 56

+34 619 42 00 26

Granada

larousteatro@gmail.com

www.larousteatro.es
